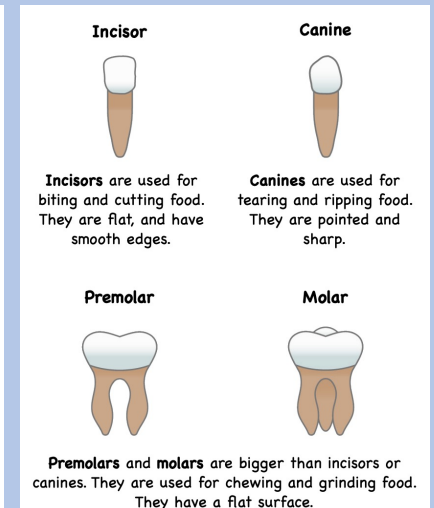
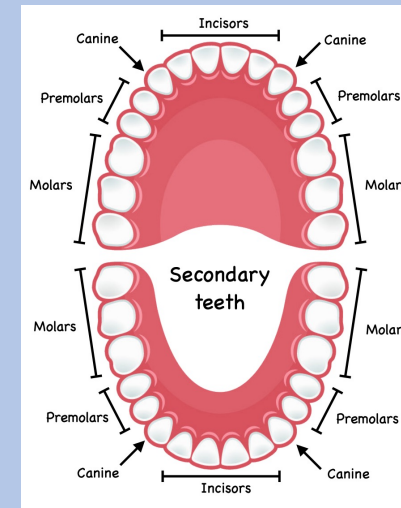
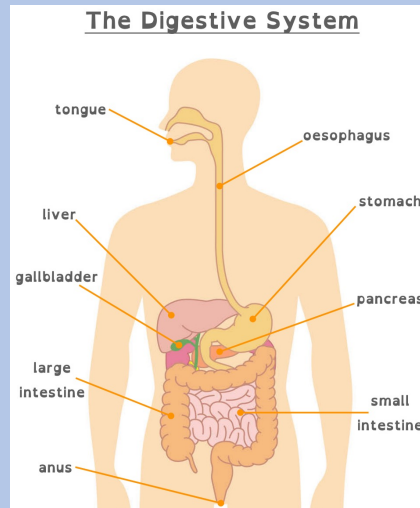


# Animals including humans

Vocabulary	Definition
Mouth	Where food begins its journey through the digestive system.
Oesophagus	The part of your body that carries food from the throat to the stomach.
Stomach	The organ inside your body where food arrives after it is swallowed and is broken down by acid.
Small Intestine	A stretchy tube that breaks down the food mixture even more after it has been in the stomach so the body can absorb all the vitamins, proteins, carbohydrates, minerals, vitamins.
Large Intestine	Absorbs all the remaining water and minerals into the blood before the waste moves out of the body.
Liver	Processes the nutrients that have been absorbed from the small intestine.
Digestion	Breaking down ingested food material.
Digestive System	A series of organs that break down the food so it can be absorbed into the blood.
Nutrients	Important substances you get from food that help your body survive and grow.



Carnivore	An animal that eats meat
Herbivore	An animal that only eats plants.
Omnivore	An animal that eats meat and plants.
Food Chain	A sequence describing how different animals eat each other.
Producer	An organism that makes its own food.
Consumer	A living thing that consumes (eats) another living thing for food to get energy.
Prey	Animals that predators eat.
Predator	An animal that eats other animals.